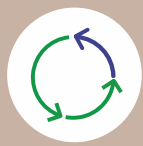




CLIMA PROGRESS

ZOOTECHNICAL CLIMATE SOLUTIONS



FAN

our company

Light Progress has been involved since 1987 in the design and production of solutions for air treatment and improvement of environmental conditions.

Applications in the field of zootechnical ventilation have always been one of our main focuses.

CLIMA PROGRESS is the division of Light Progress S.r.l. which deals with products for ventilation in the zootechnical field.

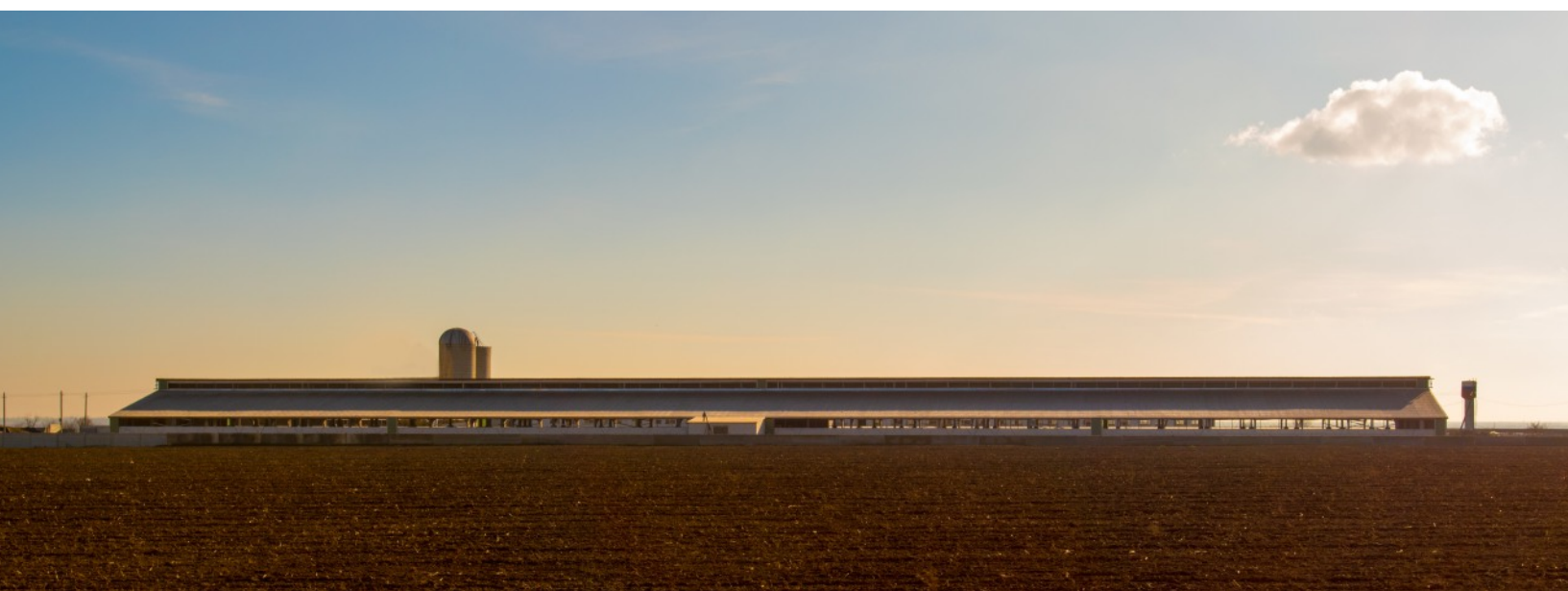
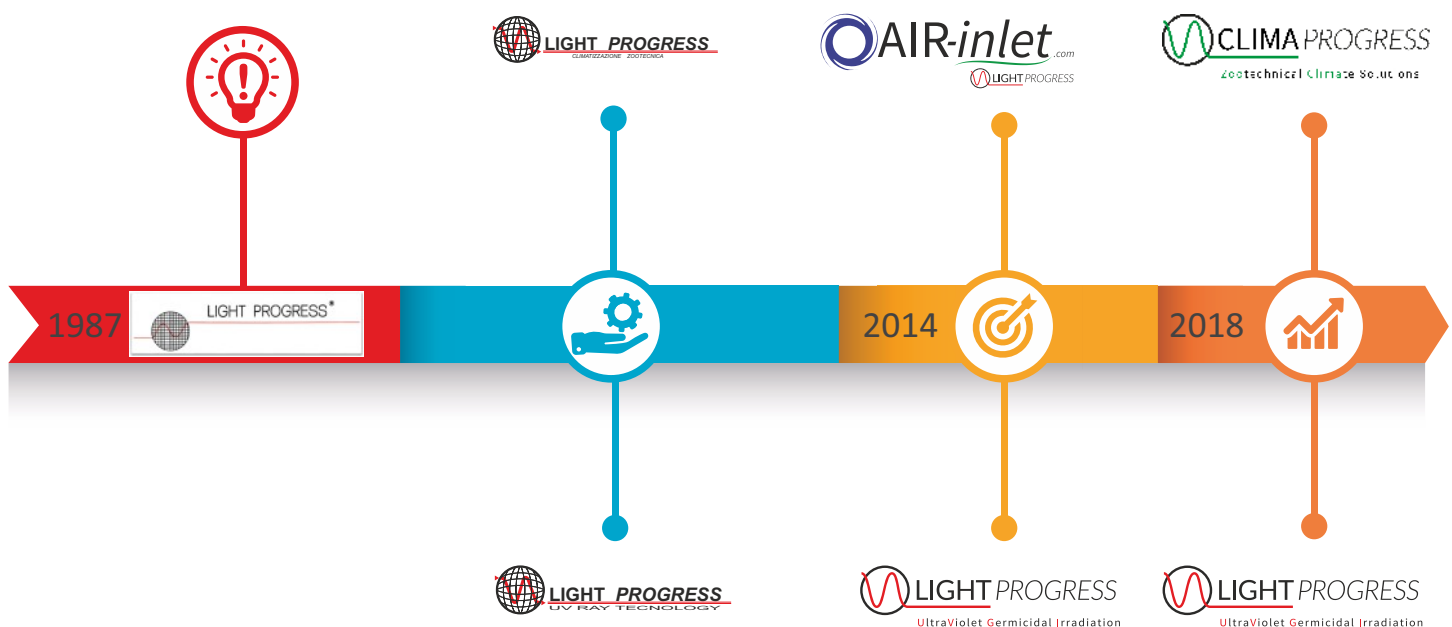
With the new brand CLIMA PROGRESS we have recently re-branded and differentiated our division involved in the design and production of equipment and automation for livestock climatization as well as the calculation and customization of their installation in existing or newly built farms.

Our experience has been constantly growing in thirty years of applications, and it has been enriched thanks to all the collaborations with technicians and designers of this sector. Our orientation to the client and his needs make us paying attention and care to the design of flexible and customizable solutions.

Our offer of practical systems and the use of high-quality materials take into consideration the applications of our products in particularly difficult environments and where aggressive agents are present, such as farms.

Every single item is entirely built in our headquarters in Italy and undergoes a specific and individual test. This attention distinguishes us and qualifies CLIMA PROGRESS for reliability, efficiency and durability of our products.

Our team is ready to meet customer requests by providing a thorough know-how and an extreme ability to adapt any product to customer needs.



FIBER FAN

THE FAN

FIBER FAN has been specifically studied and designed for the application in adverse conditions, such as they may occur in zootechnic farm, chemical, industries etc...

All its components have been designed considering the stress to which they are going to be used subjected, for this reason we paid special attention to the engine's components: bearing, winding and armatures have been arranged to endure hard labour for a long time.

Furthermore the 'flat' execution of engine, which does not stick out of the FAN's outline, reduces the protruding dimensions.

The fan and the hub represent a further innovation in the FIBER FAN range: in fact the blades have efficiency and are removable one by one from the hub, so that the user him self can easily substitute them, likewise the hub has been made of diecast aluminum and fan in self-balanced.

CHARACTERISTICS

ENGINE:

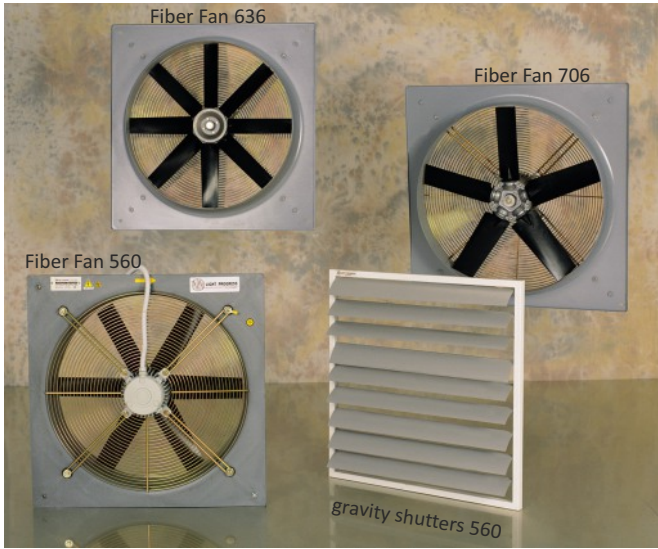
- ⑩ IP 55 execution (sheltered from fine dust and water jets);
- ⑩ Class b or f winding;
- ⑩ Double protection bearing;
- ⑩ Fit for electronic management;

IMPELLER:

- ⑩ aluminum alloy hub;
- ⑩ Nylon blades with fiberglass in every models and removable one by one

FRAME:

- ⑩ Plastic shock-resistant conveyor until 630mm, beyond this diameter the conveyor is made of epoxy laquered sheet steel.
- ⑩ A steel protective guard using special paint
- ⑩ Stainless steel screws



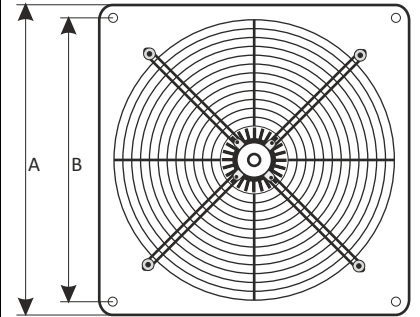
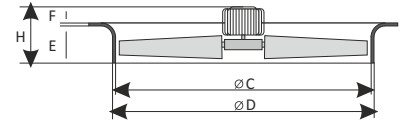
ALL THE FANS ARE BUILT IN ACCOMPLIANCE WITH CEE NORMS

FIBER FAN 500



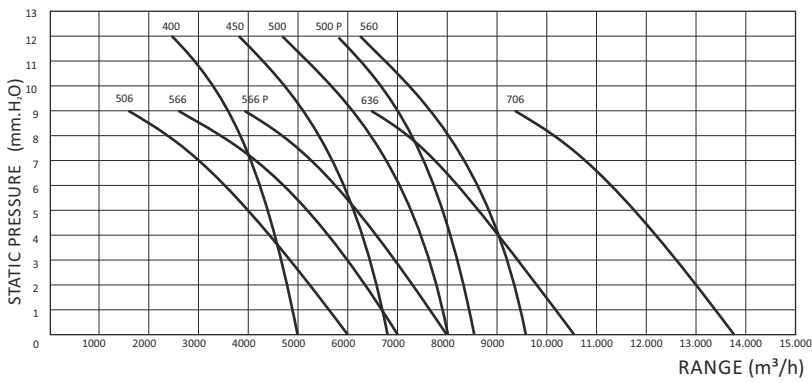
MODELS AND TECHNICAL DATA

MODELS	KW	RPM	AMP.	M ³ /h	dB (A)	A	B	∅ C	∅ D	E	F	mm. H
SINGLE-PHASE 220V												
FIBER FAN 400M	0,22	1350	1,1	5.000	58	510	450	412	420	90	70	161
FIBER FAN 450M	0,25	1340	1,3	6.800	61	568	510	460	468	90	70	161
FIBER FAN 500M	0,33	1340	1,6	8.000	68	630	580	508	516	90	70	161
FIBER FAN 500M P	0,37	1340	1,7	8.500	70	630	580	508	516	90	130	221
FIBER FAN 560M	0,40	1340	1,8	9.800	72	680	640	568	576	90	130	221
FIBER FAN 636M	0,37	900	2,2	10.500	64	710	708	638	646	90	155	246
THREE-PHASE 380V												
FIBER FAN 400T	0,20	1365	0,6	5.000	58	510	450	412	420	90	70	161
FIBER FAN 450T	0,25	1360	0,75	6.800	61	568	510	460	468	90	70	161
FIBER FAN 500T	0,29	1355	0,8	8.000	68	630	580	508	516	90	70	161
FIBER FAN 500T P	0,33	1355	0,9	8.500	70	630	580	508	516	90	130	221
FIBER FAN 560T	0,40	1340	1	9.800	72	680	640	568	576	90	130	221
FIBER FAN 506T	0,13	900	0,5	6.000	58	630	580	508	516	90	70	161
FIBER FAN 566T	0,16	900	0,55	7.000	61	680	640	568	576	90	70	161
FIBER FAN 566T P	0,18	900	0,7	8.000	62	680	640	568	576	90	130	161
FIBER FAN 636T	0,37	900	1,1	10.500	64	710	708	638	646	90	155	246



dB(A) has been measured at a distance of 3 meters in suction mode.

This table is not to be considered binding; data and characteristics may be subordinate to variations without forewarning



FIBER FAN 560 P



FIBER FAN 636



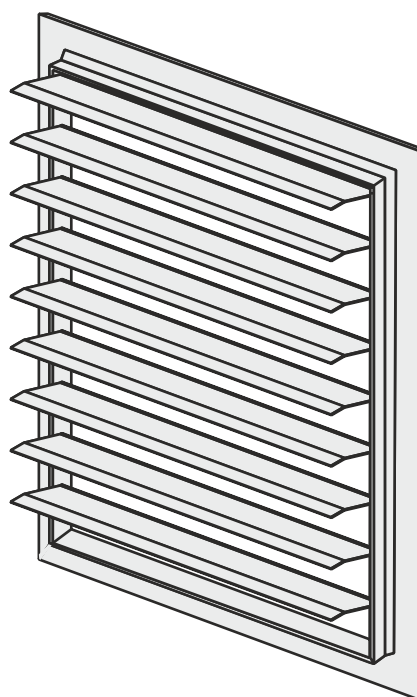
FIBER FAN 450

PVC...

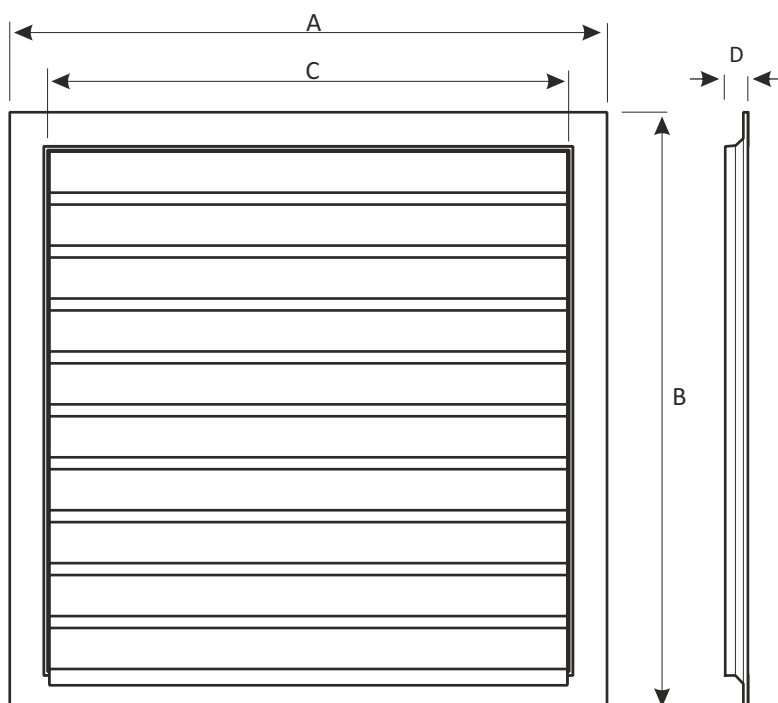


PVC..L

WINDOWS MADE WITH PVC AND A PVC
FRAME, "L-SHAPE" 30X45
FROM 350 TO 710



SIZES PVC..L



	A = B	C	D
PVC L 350	450	360	30
PVC L 420	520	430	30
PVC L 500	590	495	30
PVC L 560	665	575	30
PVC L 630	725	635	30
PVC L 710	797	707	30



Divisione Zootechnical Climate Solutions/ Produzione 2
Loc. San Antonino, 40
52043 Castiglion F.no (AR) ITALY

T. +39.0575.657423 F. +39.0575.657502

www.climaprogress.it - info@climaprogress.it

CLIMA PROGRESS is a brand of



*Legal Office /Headquarter / UV division
Loc. San Lorenzo, 40 52031 Anghiari (AR) ITALY
info@lightprogress.it
IT01208950517*

